

THOUGHTFUL ARCHITECTURE. BEAUTIFUL NATURAL AMBIANCE.
RIVER-FACING APARTMENTS



LUXURIOUS 2/3/4 BHK APARTMENTS



YOUR HAPPINESS CLOSE TO A GREEN VALLEY

Site Address: Sankhedi Near Bawadiya Bridge, E-8 Extension, Bhopal



The Promoters
UJJAWALA
Housing & Finance Private Limited

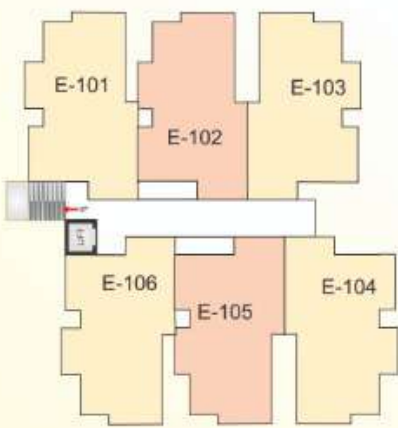
MEMBER
CREDAI
Confederation of Real Estate
Developers Association of India

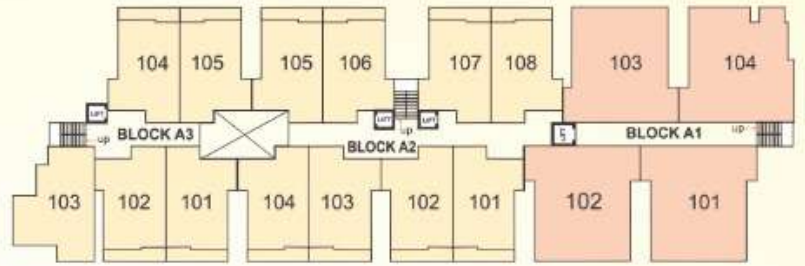


Bird Eye View

LAYOUT PLAN

BLOCK-E 2 BHK



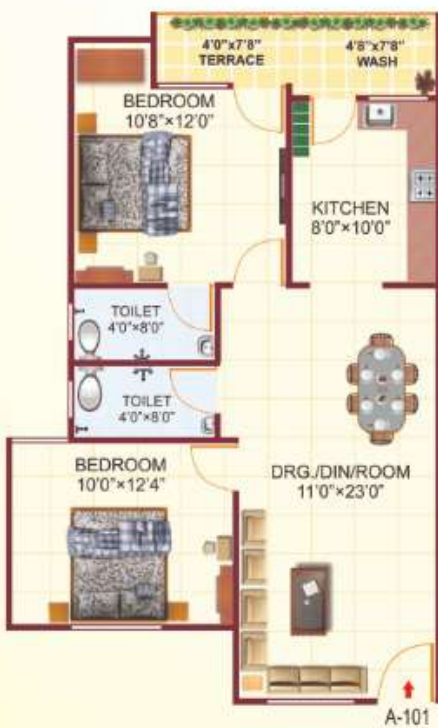


BLOCK-A 4 BHK & 2 BHK



A1-101/104 - 4 BHK

A1- 102/103 - 4BHK

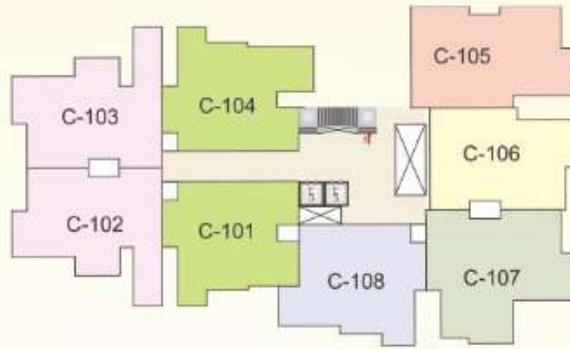


A2-101 to 108 | A3 -101,102, 104,105 - 2 BHK

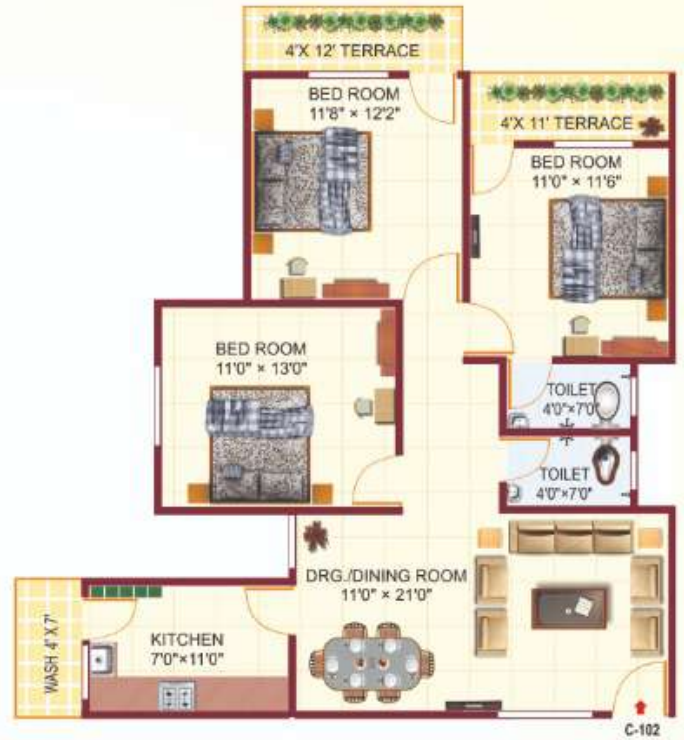
A3-103 - 2BHK

E -101,102, 103,104,105, 106

BLOCK-C 3BHK



C-101 / C-104



C-102 / C-103



C-105



C-106

A NEW BEGINNING TO CELEBRATE JOYS OF EVERYDAY LIVING

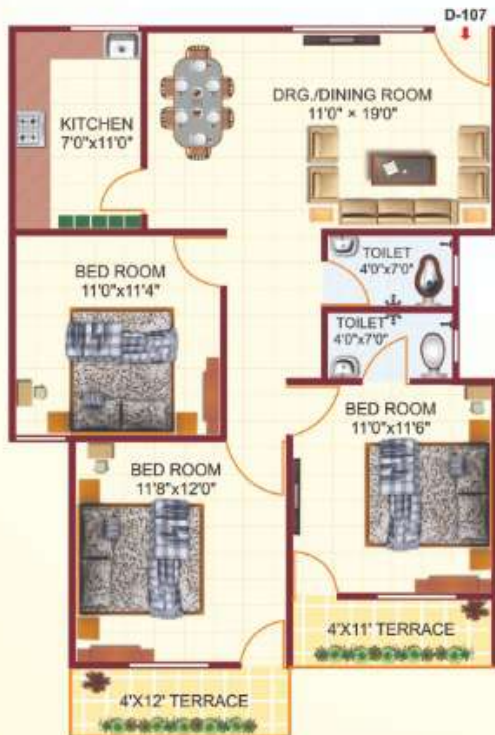


C-107

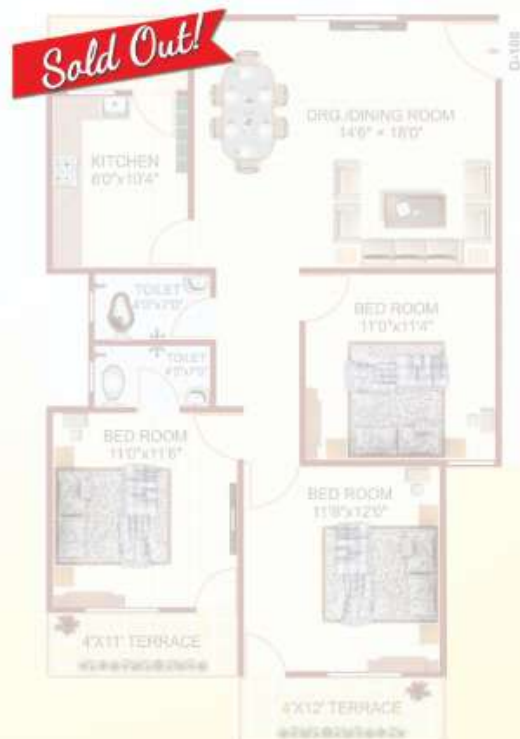
C-108



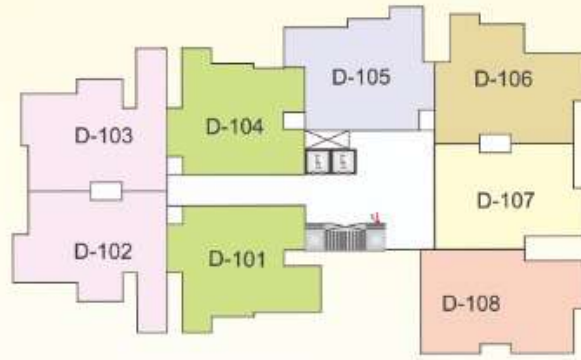
TOMORROW'S LIFESTYLE AT A PREMIUM ADDRESS & SIDE OPEN LOCATION



D-107



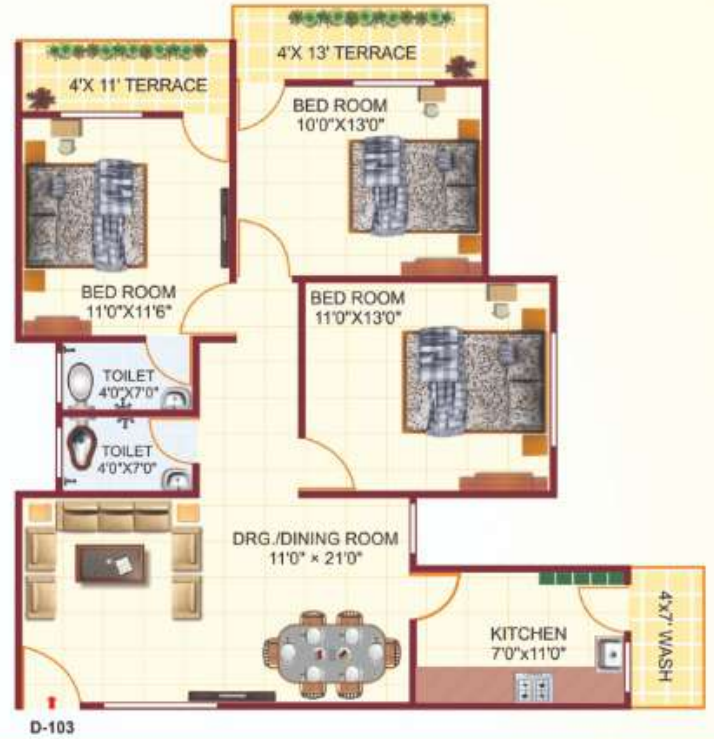
D-108



BLOCK-D 3BHK



D-104 / D-101



D-103 / D-102

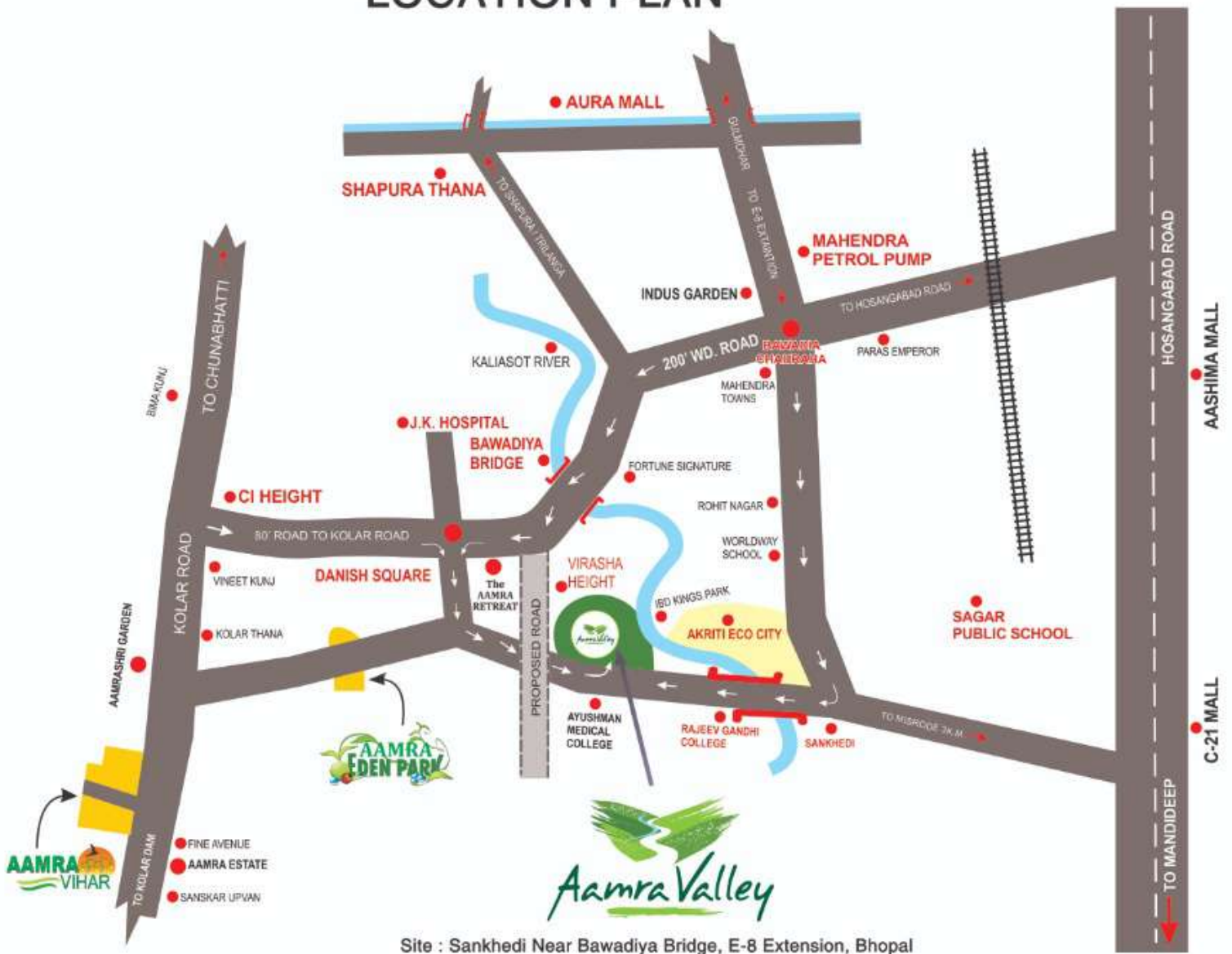


D-105



D-106

LOCATION PLAN



Site : Sankhedi Near Bawadiya Bridge, E-8 Extension, Bhopal

THE SPECIFICATIONS

- Structure - R.C.C. framed structure.
- Walls - Brick Masonry.
- Doors - Elegant entrance door with decorative flush door shutter, Dewas Section Frame with Good Quality SS / Aluminum Fitting.
- Windows - Powder Coated 3 Track Aluminum Sliding Window with M.S. Security Grill and Mosquito Net.
- Floor - Hall, Rooms & Kitchen- Vitrified Tiles, Balcony & Toilets - Antiskid Tiles.
- Kitchen - Granite Slab for Kit Platform with Steel Sink & Ceramic wall Tiles up to 2'HT.
- Toilet - Designer Ceramic wall tiles up to 7' HT. concealed CPVC / UPVC Fitting, CP Fitting and Sanitary of standard Quality make. One Indian Seat & other European Seat.
- Electrical - Concealed Copper wiring, Modular Switches, Circuit Secure through MCB.
- Painting - Internal Painting with wall care Putty and Acrylic Paint. External Painting with Weather Shield paint finish.
- P.O.P. - Hall and All Bed Rooms.



The Promoters
UJJAWALA
 Housing & Finance Private Limited

ARCHITECTS
Vikram & Aradhana Mohile / INTERARCH
 Bhopal. Ph.: 09229169130

Office: Aamra Vihar, Nayapura, Kolar Road, Bhopal (M.P.)
 Tel.: 0755- 4292756, 9926767668 / 9926673057 / 9826094470
 www.ujjawalabuilder.com / E-mail: ujjawalabuilders@yahoo.in